



# LEATHERHEADS + ACCESSORIES

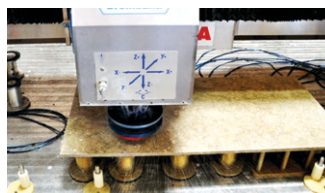
Use your CNC router or CNC bridge saw to leather your stone!

## THE LEATHERHEAD 13"

Part #: 14-500-03






Part #: 14-500-01



### Product Info:

- ✓ Adapts to any 35 mm conic tool holder
- ✓ Can be used on belt driven and electro-spindle machines
- ✓ Accepted Brush Styles:
  - Frankfurt-style brushes
  - 4" and 5" Snail Lock brushes
- ✓ Included with The Leatherhead:
  - Frankfurt-style Adaptors
  - 4" Snail Lock Adaptors (3) w/ 14-500-03 only
  - 5" Snail Lock Adaptors (3) w/ 14-500-03 only
  - 6 mm Spacers (2)
  - M12 End cap w/fastener (1)
  - M10 End cap w/fastener (1)

Item	Frankfurt Adaptor	4" Snail Lock Adaptor	5" Snail lock Adaptor
Part #	14-500-01-16 (Left) 14-500-01-17 (Right)	14-500-03-04	14-500-03-05
Price	\$12.00 ea.	\$75.00 ea.	\$95.00 ea.
			

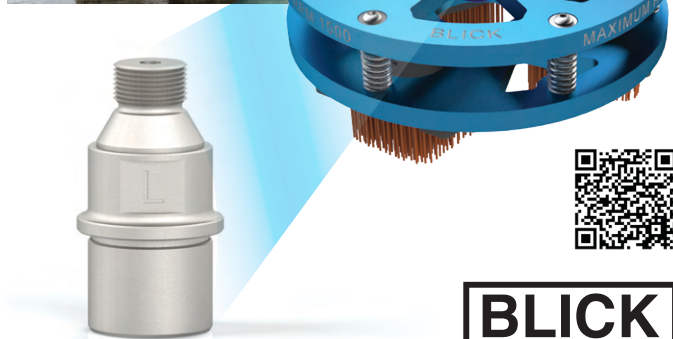
Item	The Leatherhead 13" w/ Snail Lock Adaptors	The Leatherhead 13" w/ Frankfurt Adaptors (only)
Part #	14-500-03	14-500-01
Price	\$2,350.00	\$1,950.00
Tool Diameter	323.85 mm (12.75")	
Tool Weight	~16.5 lbs.	
Overall Height	67 mm (2.625") w/o spacers and brushes	
Adaptor Type	35 mm Conic Tool Holder	
Spindle Speed	1,000 RPM or 1,200 RPM < 1,500 RPM	
Feed	Start at 100 inches/minute (2,540 mm per minute)	
Notes	Do NOT subject the tool to more than 1/8" of compression. Dimensions and weight are for the tool only and they do not include the spacers, brushes or tool holder. Tool holder and brushes are not included. Customers are to specify through-bolt sizes (M10 or M12).	

## 1/2" GAS ADAPTORS

Use The Leatherhead on your 5-axis saw!

The adaptors are available in Left-handed (tightens by turning counter-clockwise) and Right-handed (tightens by turning clockwise) threading.

Item	Left-handed Thread Adaptor	Right-handed Thread Adaptor
Part #	14-101-11	14-101-10
Price	\$175.00	
Tool Weight	1 lb.	
Tool Height	76.2 mm (3")	
Arbor Diameter	35 mm	



## THE LEATHERHEAD 11.25"

Part #: 14-500-12



### Product Info:

- ✓ Alternative to The Leatherhead 13"
  - Clears the shroud of smaller routers
- ✓ Adapts to any 35 mm conic tool holder
- ✓ Can be used on belt driven and electro-spindle machines
- ✓ Accepts Frankfurt-style brushes
- ✓ Included with The Leatherhead:
  - Frankfurt-style Adaptors
  - 6 mm Spacers (2)
  - M12 End cap w/fastener (1)
  - M10 End cap w/fastener (1)



## LEATHERHEAD MINI

Part #: 14-500-04



### Product Info:

- ✓ Fits into most tool racks
- ✓ Adapts to any 35 mm conic tool holder
- ✓ Can be used on belt driven and electro-spindle machines
- ✓ Accepted Brush Styles:
  - 4" and 5" Snail Lock brushes
- ✓ Included with The Leatherhead:
  - 4" Snail Lock Adaptor (1)
  - 5" Snail Lock Adaptor (1)
  - 6 mm Spacers (2)
  - M12 End cap w/fastener (1)
  - M10 End cap w/fastener (1)



Item	The Leatherhead 11.25"	Leatherhead Mini
Part #	14-500-12	14-500-04
Price	\$1,900.00	\$950.00
Tool Diameter	285.75 mm (11.25")	324 mm (12.75")
Tool Weight	~14 lbs.	~4 lbs.
Overall Height	67 mm (2.625") w/o spacers and brushes	
Adaptor Type	35 mm Conic Tool Holder	
Spindle Speed	1,000 RPM or 1,200 RPM < 1,500 RPM	3,000 RPM
Feed	Start at 100 inches/minute (2,540 mm per minute)	Start at 250 inches/minute (6,350 mm per minute)
Notes	<p>Brush compatibility may vary with The Leatherhead 11.25"; inquire about compatible brushes. The Leatherhead 11.25" does NOT accept Snail Lock brushes. Do NOT subject the tool to more than 1/8" of compression. Dimensions and weight are for the tool only and they do not include the spacers, brushes or tool holder. Tool holder and brushes are not included. Customers are to specify through-bolt sizes (M10 or M12).</p> <p>Can NOT use Left-handed 1/2" Gas Adaptor with Leatherhead Mini. Do NOT subject the tool to more than 1/8" of compression. Dimensions and weight are for the tool only and they do not include the spacers, brushes or tool holder. Tool holder and brushes are not included. Customers are to specify through-bolt sizes (M10 or M12).</p>	

